

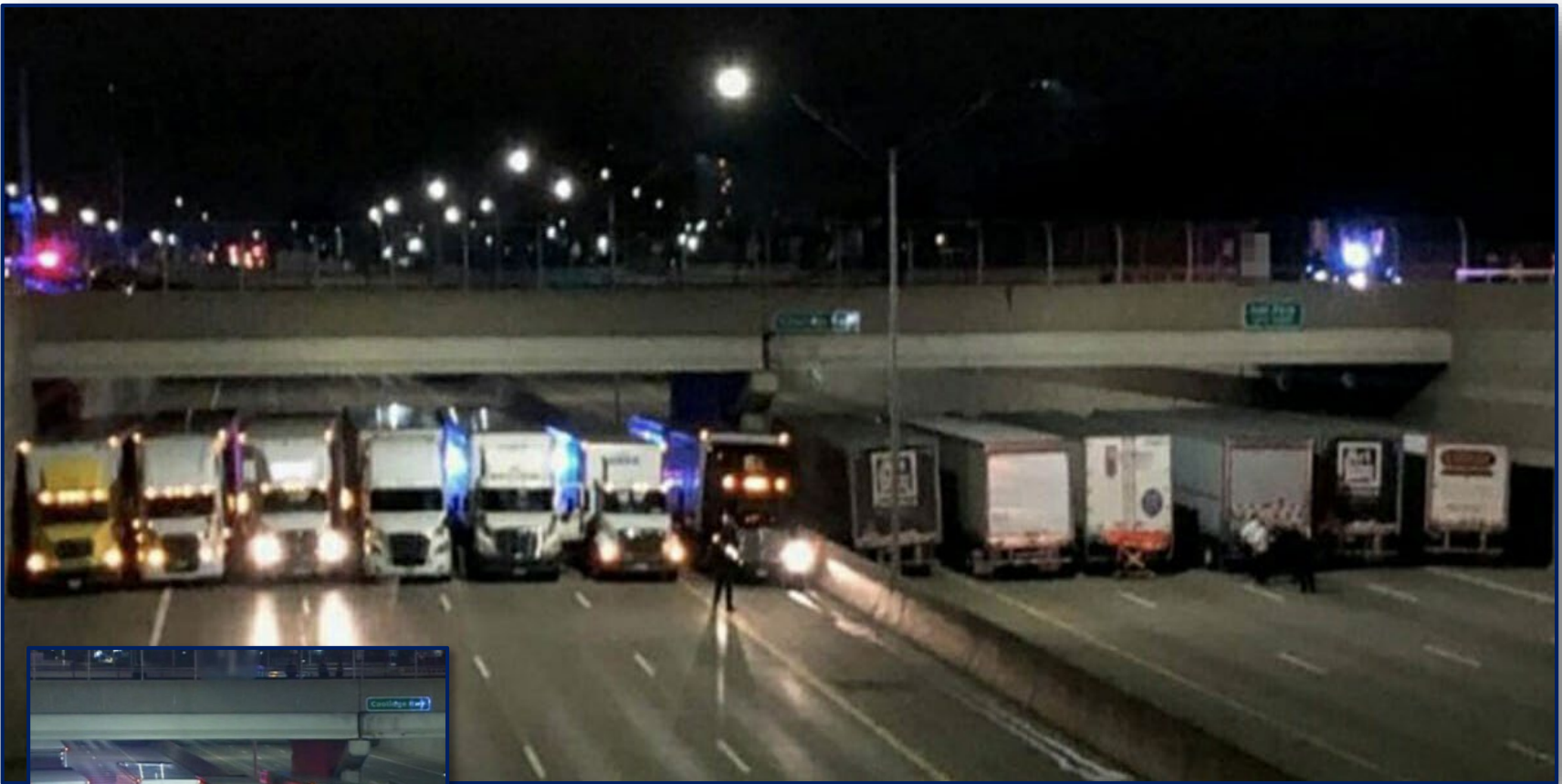
# MULTI-AGENCY COORDINATION DISCUSSION-BASED EXERCISE

**Mike Loper, PEM, MEP**  
Oakland County Homeland Security



March 7, 2019

**Southeast Michigan  
Traffic Incident Management Partners Workshop**



**April 24, 2018**  
**I-696 @ Coolidge Highway**



SE MI TIM Partners Workshop 2019

# SNOW SQUALLS



“Snow squalls pose serious threats to personal safety and property and produce costly transportation disruptions due to multi-vehicle pileups.”

For more information visit [weather.gov](http://weather.gov)



# EXERCISE

## FOUNDATION, FACILITATION, & OBJECTIVES

- Discussion-Based Exercise (HSEEP)
- Group Activity (handouts, injects, table activity, share)

*To have workshop attendees engage in a scenario-based discussion concerning a mock major traffic incident. The exercise shall focus on partners recognizing the importance of communication, coordination, and cooperation between multiple on-scene as well as behind-the-scene agencies, organizations, and entities.*

*To promote the concept of Unified Command in accordance with NIMS / ICS, and promote the MI-TIME training program.*

# SCENARIO BUILD-UP

It is a **weekday afternoon** in the **winter**.

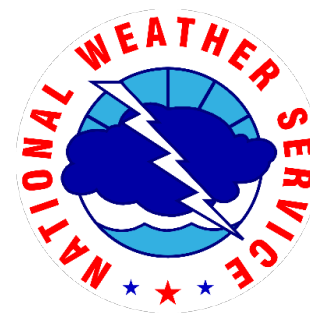
Travel on metro Detroit roadways in normal to heavy. Most schools were open today and most agencies / organizations are at normal staffing.

A few days ago we had several inches of snow and temperatures have been cold. The interstate highways have been plowed and treated, and are in fairly good condition.

# SCENARIO BUILD-UP (Continued)

Earlier today, the National Weather Service (NWS) issued a **Winter Weather Advisory** for many counties in Southeast Michigan in effect from 11:00 AM to 9:00 PM.

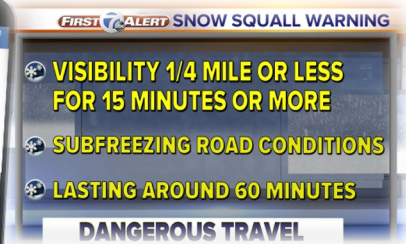
There is a chance for scattered snow showers or flurries with 1-3 inches of accumulation. Blowing snow and falling temperatures may cause slick road conditions, but there is no major winter storm forecasted.



# SCENARIO INJECT #1

This situation is RADAR indicated and quickly developing with a duration of less than an hour...

The **NWS Detroit / Pontiac** (White Lake) issues a **Snow Squall Warning** for the specific areas being threatened by this hazard.



# SCENARIO

Approximately 3:05 PM, there is a sudden **intense**, but **brief period of moderate to heavy snowfall**, accompanied by **gusty surface winds**, resulting in **low or no visibility** – a **whiteout** condition – moving east over an area of **expressway-freeway** in SE Michigan.

(I-75, I-96, I-94, I-275, I-696, US-23,...)

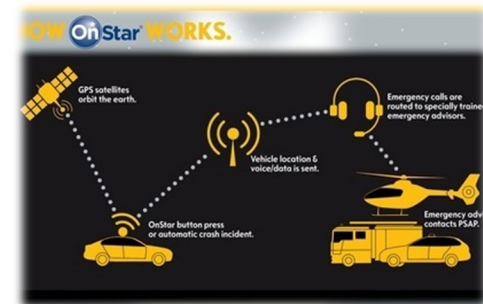




# SCENARIO (Continued)

The snow squall causes a **large highway pileup** in the northbound (or WB) lanes and the center median. Traffic is totally blocked NB (or WB) and stopped in both directions.

There are dozens of calls to **9-1-1** as well as reports being posted via *social media*. The volume of calls become overwhelming for the public safety answering point (PSAP). Several emergency calls are also made via **GM On-Star**.



# SCENARIO (Continued)

This major traffic crash incident involves nearly 45 vehicles, to include many cars, SUVs, several mini-vans, approximately 10 semi-trucks, and at least one tanker truck.

There are several reported **entrapments**, at least one vehicle on **fire**, and a possible **hazardous materials** leak.



# SCENARIO INJECT #2

This is a **Mass Casualty Incident (MCI)** and a **Multiple Fatality Incident (MFI)**:

- **23 injured**
  - **12 priority one (trauma immediate)**
  - **6 priority two and 5 priority three (minor, walking)**
  - *One (1) of those injured is a **police officer** struck at scene during a secondary accident*
- **2 killed**

# SCENARIO INJECT #3

## Weather & Situation Update:

- It is cold outside, temps in the low 20s and down into teens, with wind chill factor making it feel single digits.
- It will begin “rush hour” on the highways soon and it will be dark in a couple of hours.

# Identify all agencies-organizations-officials-resources involved in managing and monitoring this type incident

## On-Scene Response

(initial, special, investigative, IC/UC, local, state, private)

- \_\_\_\_\_
- \_\_\_\_\_
- \_\_\_\_\_
- \_\_\_\_\_
- \_\_\_\_\_
- \_\_\_\_\_

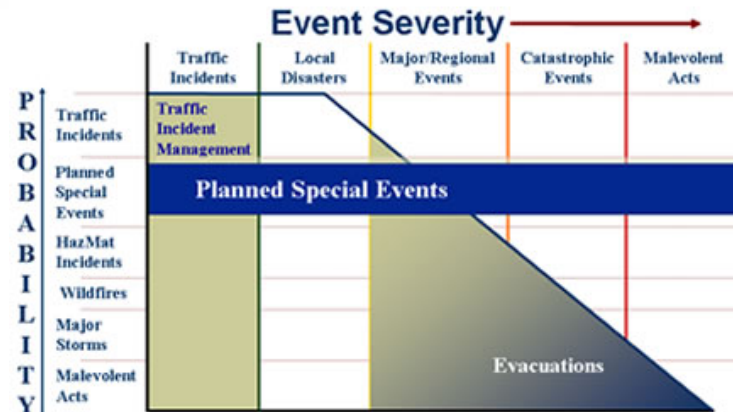
## Coordination & Support

(from hospitals to public officials, county-state-federal)

- \_\_\_\_\_
- \_\_\_\_\_
- \_\_\_\_\_
- \_\_\_\_\_
- \_\_\_\_\_
- \_\_\_\_\_

Name or acronym for agency or discipline – use your worksheet handout

*Please continue to network with partners during lunch and visit sponsor tables*





## WHAT IS A SNOW SQUALL WARNING?

Issued when a snow squall occurring  
or happening in near future

Small, targeted area

Typically in effect for 30-60 minutes

Similar to tornado or severe  
thunderstorm warnings



## STAYING SAFE DURING A SNOW SQUALL

- Have a way to get forecasts and warnings
- Consider an alternate route or delaying travel
- Stay alert for rapidly changing road conditions
- Watch for brake lights ahead
- Reduce speed and use low beam headlights



Local media headline:

## WB M-5 ramp to SB I-275 closed due to hazmat situation

Ramp to be closed for about 12 hours, MSP says



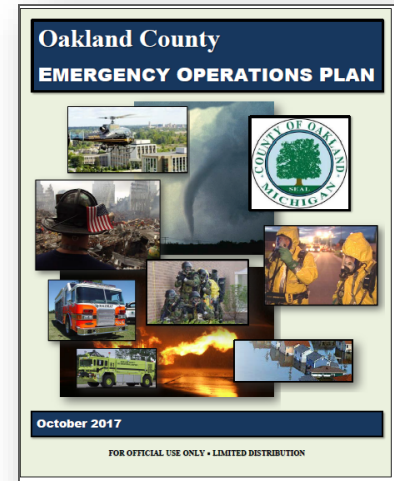
Farmington Hills, MI  
October 1, 2018





# Emergency Management Overview

- **Emergency Operations Plan (EOP)**
  - Local Support Plans
- **EOC**
  - County Executive; full-partial-monitoring activation
  - Emergency support function reps (to include other county agencies such as Health and WRC, utilities such as DTE Energy, Consumers Energy, and GLWA, and mass care services such as American Red Cross and VOADs, also HAMs)
  - Coordination with Incident Management Team (IMT), local CEO and Emergency Management Liaisons, and with MSP-EMHSD District 2N Coordinator / SEOC.
  - Damage Assessment
- **State of Emergency / Disaster Declaration process – Michigan Public Act 390**



# ICS – EOC Interface

- **NIMS** (National Incident Management System)
- **ICS** (Incident Command System) – *on-scene*
- **EOC coordination and support**
  - *behind-the-scene:*
    - Resources
    - Maintain situational awareness
    - Multi-agency coordination with local (cities-villages-townships), State (MSP-EMHSD) and Federal (DHS, FEMA) – agencies / authorities having jurisdiction – a tiered response and recovery concept

